



Basin-less Bathing Back to basics

Ellen Burke RN, BN, PGDip CritCare, MN

Registered Nurse

Department of Critical Care Medicine

Royal Hobart Hospital



Background

- High incidence of Hospital Acquired Infections (HAI)
- Increasing evidence
- No standard practice for bathing patients
- Basins used not just for hygiene
- What is in the water?
- We used chlorhexidine bath cloths for cardiothoracic patients



We had NO control



TAP WATER



WASH BASINS

\$61,390

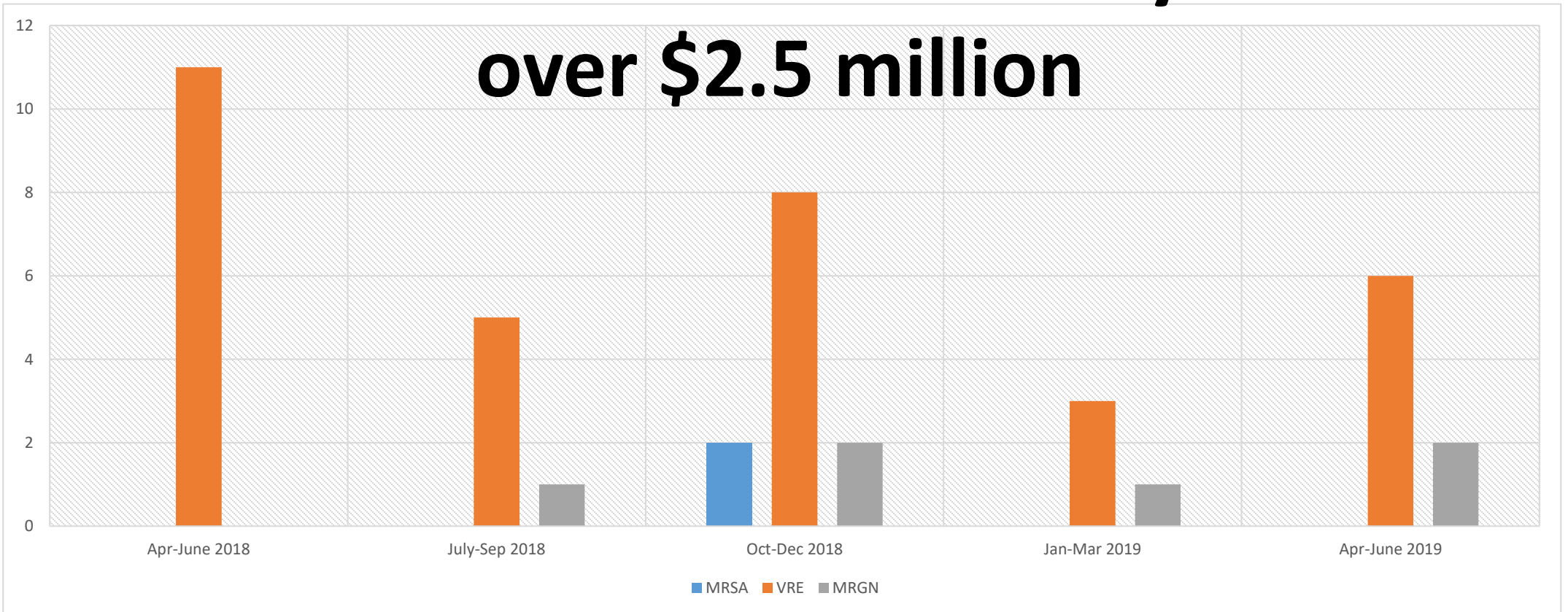
Per Patient



Pre Implementation Data

Total cost to the healthcare system of

over \$2.5 million



Benefits of Chlorhexidine impregnated wipes

- CHG is a broad-spectrum antiseptic
- CHG reduces skin colonisation of common pathogens
- CHG can also indirectly reduce contamination to other patients
- Used for Cardiothoracic surgical patients



Re-gaining control

- Ph balanced
- Aloe and vitamin e
- Latex free and hypoallergenic



Implementation

Key stakeholders

Establish current hygiene practices

2 months of education

Recruit staff who are willing to champion the practice change

Commence the change on the advertised date

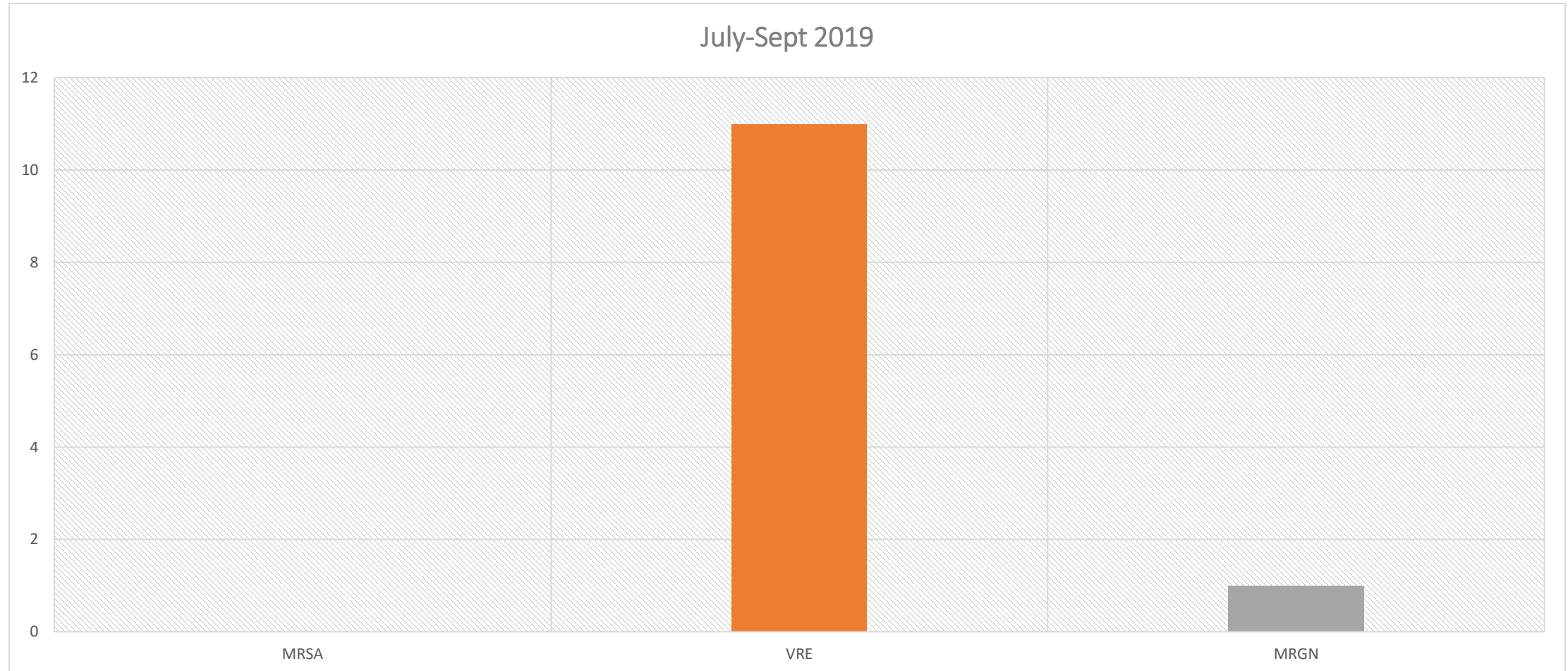




Streamlined process

- Every patient Every day to have a chlorhexidine wash
- Other washes are to be done using the pre packaged baths
- Warm towels are available in the blanket warmer for use to replicate the hot towel feeling
- Shower caps are still available for use

Adapting to change

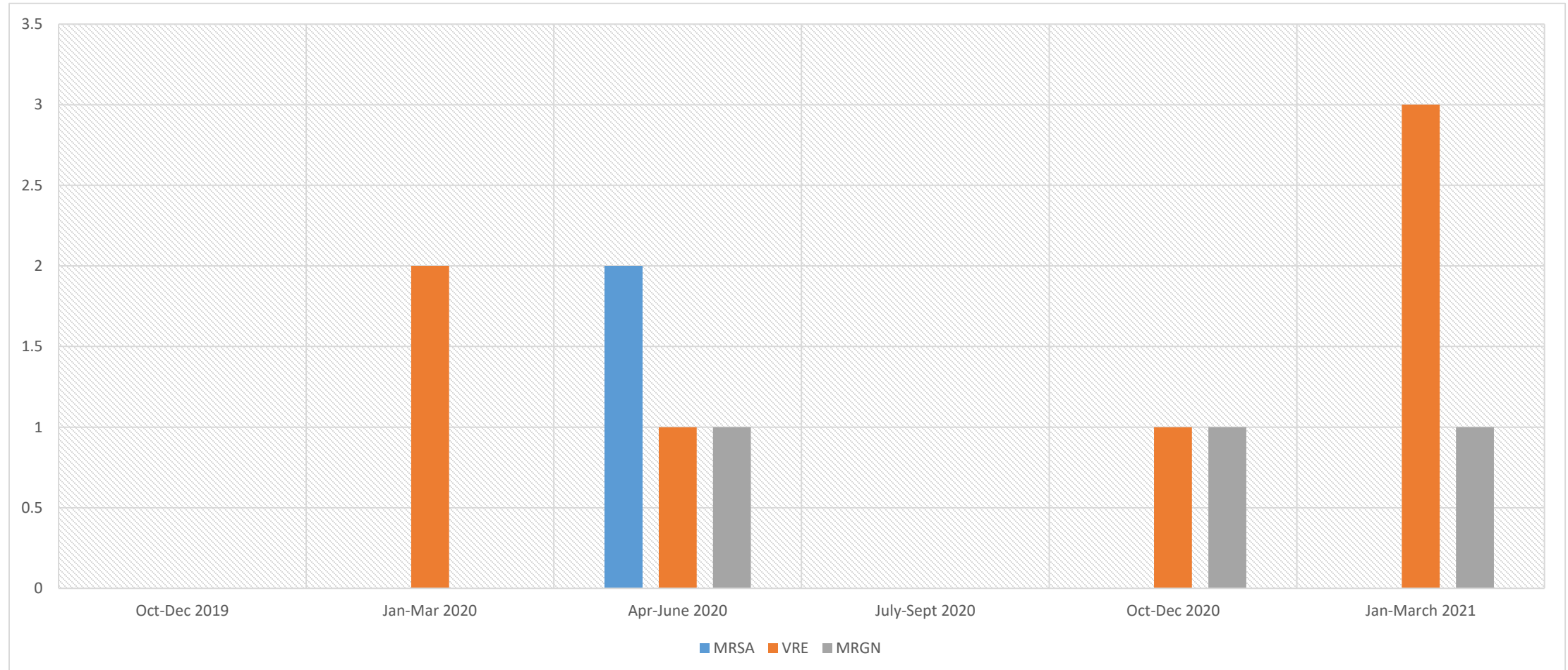


But how did the patients feel???

Patient centred care

- “It felt good. It was good to have a back rub and feel clean”
- “My skin felt soft and I had moisture”
- “I feel well looked after”
- “I thought it was good”
- “Such a nice feeling having a wash after being unwell”
- “I feel a lot cleaner”

Post Implementation data



Case study

46 days in the ICU

Daily Chlorhexidine wash, and pre-packaged baths wash only

11 days after discharge from ICU, acquired VRE

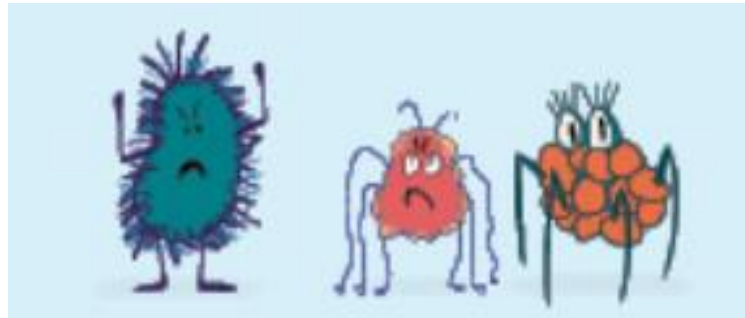
Staff feedback

- “Because they are quick and don’t saturate the bed washes can be done before or after the orderly round”
- “Easy and efficient”
- “Patients skin overall seems not to have suffered, if anything it has improved”
- “Patients skin overall seems not to have suffered, if anything it has improved”
- “This is great evidence based strategy which has been implemented in the unit well”
- “Agree 100%, but nothing is better than a shower “



By reducing HAI's in the ICU

\$1.7 million
In 18 months



This is just a small step..

Hand Hygiene



Contact precautions

Visitors
See a nurse for information before entering the room

For all staff
Contact Precautions
in addition to Standard Precautions

Before entering room

1. Perform hand hygiene
2. Put on gown and apron
3. Put on gloves

On leaving room

1. Remove all gloves
2. Perform hand hygiene
3. Remove gown and apron
4. Perform hand hygiene

Is this something that
could be adapted in
your workplace?

ellen.burke@ths.tas.gov.au

Thank you

References

- Frost, S, Alogso, M, Metcalfe, L, Lynch, J, Hunt, L, Sanghavi, R, Alexandrou, E, Hillman, K. Chlorhexidine bathing and health care-associated infections among adult intensive care patients: a systematic review and meta-analysis. *Critical Care*. 2016; 20: 379
- Amirov, C, Binns, M, Jacob, L, Candon, H. Impact of chlorhexidine bathing on methicillin-resistant *Staphylococcus aureus* incidence in an endemic chronic care setting: a randomized controlled trial. *American Journal of Infection Control*. 2017; 45, (3):298–300
- Lowry, F. "Clean" Hospital Bath Basins Contaminated With Resistant Bugs. Reuters Health Information Critical Care Congress of the Society of Critical Care Medicine. 2017.
- Kanamori, H, Weber, D, Rutala, W. Healthcare Outbreaks Associated With a Water Reservoir and Infection Prevention Strategies. *Healthcare Epidemiology*. 2016; 62(11):1423-35
- Australian Commission on Safety and Quality in Health Care (2019). The state of patient safety and quality in Australian Hospitals. Available at <https://www.safetyandquality.gov.au/publications-and-resources>. Accessed 18/11/19.
- Australian Commission on Safety and Quality in Health Care, (2018). Hospital-Acquired Complications Facts Sheets: Supporting safety and quality in Australian health services. Available at <https://www.safetyandquality.gov.au/our-work/indicators-measurement-and-reporting/complications/hacs-information-kit>. Accessed 18/11/2019.
- Dawkins, J, Vinczer, N, Lagana, D (2016). Universal Decolonisation in an Australian Quaternary Intensive Care Unit. Government of South Australia. Available at <https://youtu.be/HW5eMwrXwJM>. Accessed 18/11/19.
- Rupp, M, Cavalieri, R, Lyden, E, Kucera, J, Martin, M, Fitzgerald, T, VanSchooneveld, T, 2012. 'Effect of hospital-wide chlorhexidine patient bathing on healthcare-associated infections', *Infection Control & Hospital Epidemiology*, no. 33, vol. 11, pp. 1094-1100
- Climo, M, Yokoe, D, Warren, D, Perl, T, Bolon, M, Herwaldt, L, Wong, E, 2013. 'Effect of daily chlorhexidine bathing on hospital-acquired infection', *New England Journal of Medicine*, no. 368, vol. 6, pp. 533-542
- Donskey, C, Deshpande, A, 2016. 'Effect of chlorhexidine bathing in preventing infections and reducing skin burden and environmental contamination: a review of the literature', *American journal of infection control*, no. 44, vol. 5, pp. 17-21